

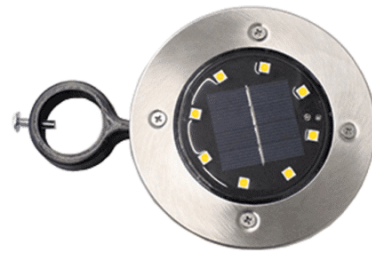
SOLAR FLAGPOLE LED DELUXE INSTALLATION AND USE INSTRUCTIONS

Please read these instructions carefully before installation.

1. **TURN THE UNIT ON** – Flip the switch on the bottom from OFF to ON
2. **TEST** – With the unit in the ON mode cover the center of the light with your palm, the LEDs will light up, if they do not, move the switch from OFF to ON, then retry.
3. **MOUNT TO YOUR POLE** – slide the LED DELUXE unit onto your pole so that it will illuminate your flag, hand tighten the set screw (DO NOT OVER TIGHTEN).

HOW YOUR SOLAR FLAGPOLE LED DELUXE WORKS:

During the day, the solar panel converts sunlight into electricity and recharges the internal AA rechargeable Lithium-Ion batteries. At night, the light turns on automatically and uses the energy stored in the batteries. At dawn the light turns off automatically and recharging starts.



The number of hours the light stays on depends on the amount of sunlight received the day before. Up to a maximum of approx. 6 Hours.

OTHER INSTRUCTIONS:

Position your solar flagpole LED light in a location where it can be exposed to maximum sunlight during the day. Keep the solar panel clean by wiping it regularly with a damp cloth. A dirty panel will reduce the amount of sunlight available to charge the unit is reduced. When storing the solar light, make sure that the device is switched OFF and the batteries are removed. The batteries can be accessed through the top, remove and replace the screws using a Phillips head screwdriver.

800-962-0956

www.FlagCo.com

FLAGCO 