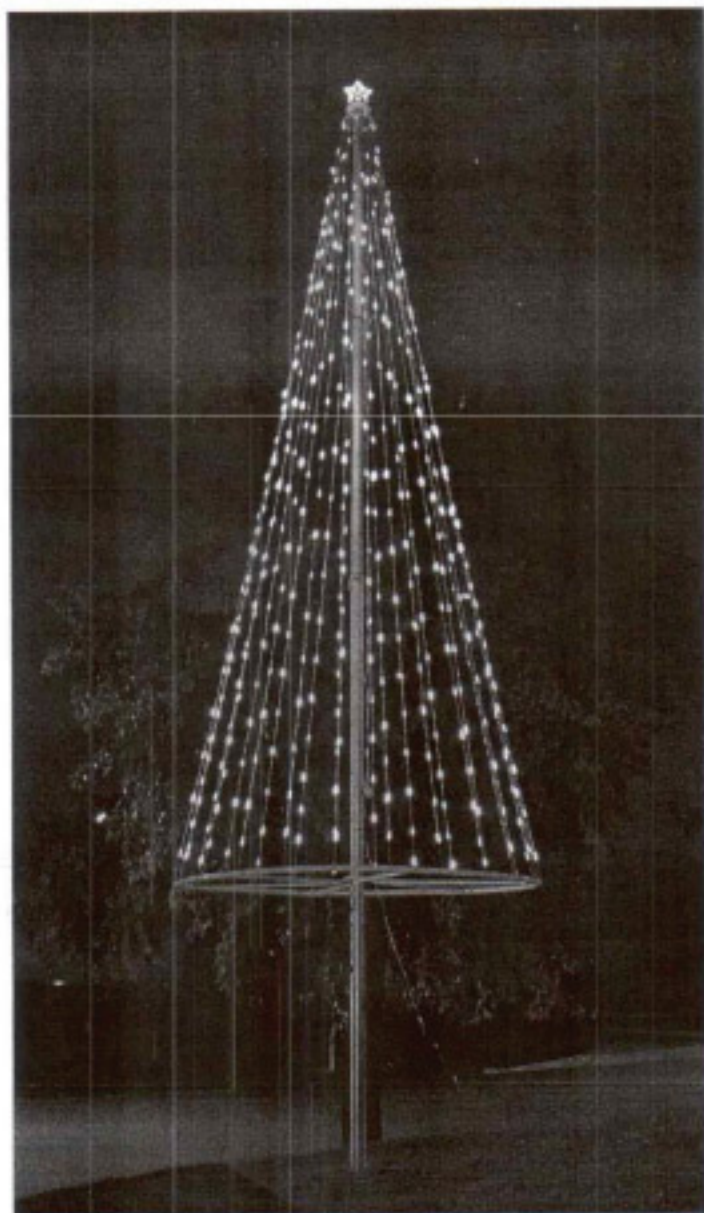


**SETUP INSTRUCTIONS OF
15 FT. LIGHT STRAND CHRISTMAS TREE**



The Flag Company, Inc.
3600 Cantrell Ind. Ct. Acworth, Ga. 30101
Phone 770 974 0507 Fax 770-974-0793

Christmas Tree Light Kit

Setup Instructions

Package includes:

- 1 15' LED light set (24 light strands)
- 1 Multi-dia. center base ring support (2 sections)
- 6 36" curved metal tubing
- 6 36" strait center lower ring supports
- 1 6" top star
- 1 Transformer
- 12 1/2" hex screws
- 2 1" hex screws
- 1 Allen wrench



Setup Instructions:

Note Please keep all packaging materials for re-packing.

1. Unpack all items in the box,
2. Lower the pole to the lowest position and remove the flags.
3. Remove any ornament that is on top of the pole.
4. To determine the pole diameter, simply test the center base ring support around the pole, and pull out any unfit inserts if needed.
Note: This multi-diameter center base ring support fits poles of either 2 1/4", 2 1/2", 2 3/4", or 3" in dia.

Place the center base ring support around the pole, use the 2 - 1" hex screws as illustrated in Fig. 1

Note: Do not tighten at this time, just enough to hold the ring around the pole.

5. Lay the curved 36" round sections of metal around the outer base of the pole, connect the sections with the 1/2" hex screws as illustrated in Fig. 2

Note: Do not tighten the screws at this time. This will form the lower outer ring

6. Start to place the lower ring supports as illustrated in Fig. 3, connect the inter end (inter end is the one that is threaded to receive the hex screw) first using the 1/2" hex screws as illustrated in Fig 3a, then the outer end using the hex screws that are holding the ring together as illustrated in Fig. 3b.

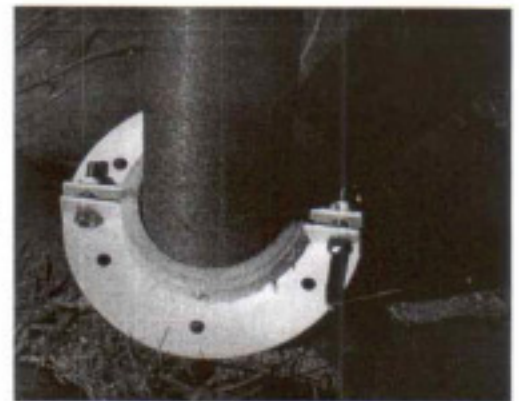


Fig. 1

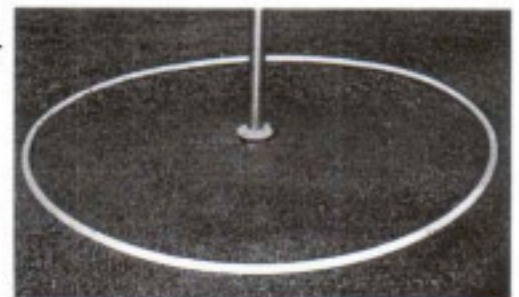


Fig. 2

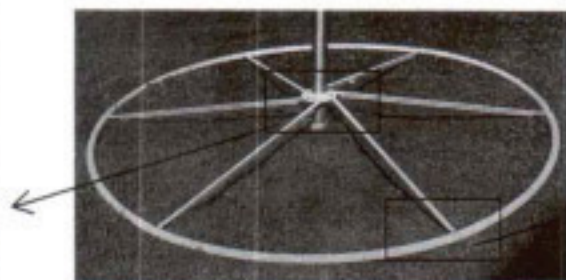


Fig. 3



Fig. 3b

Setup Instructions

7. As shown in Fig.4, place the top of the light kit onto the top of the flagpole, and then use the 6" top star to secure the light kit top by screwing the star to the top of the flagpole. (Note: The flat side of the light kit top is the bottom.)

8. As shown in Fig. 4a, connect the power cord of the 6" top star to the power supply underneath of the light kit top.

Fig. 4a



Fig. 4

Note:

Test the lights.

Find the power cord of the light kit and connect it to the transformer, then connect the transformer to a power outlet. After you test the lights, disconnect the transformer from the power outlet.

9. Unwrap the light strands from the plastic wrappers and set up the light kit as illustrated in Fig. 5-6

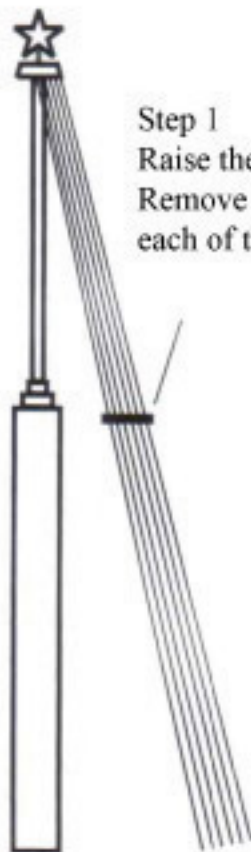


Fig. 5

Step 1
Raise the first section of the pole.
Remove the first Velcro strip from
each of the four groups of light strands.

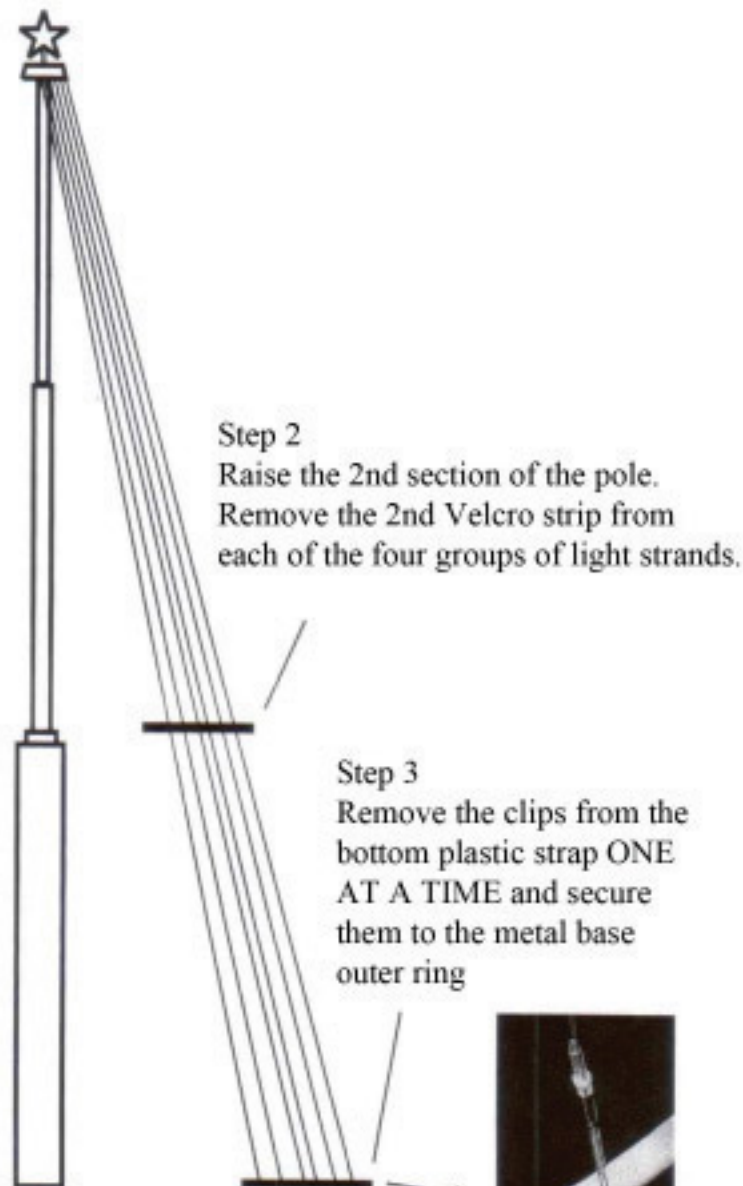


Fig. 6

Step 2
Raise the 2nd section of the pole.
Remove the 2nd Velcro strip from
each of the four groups of light strands.

Step 3
Remove the clips from the
bottom plastic strap ONE
AT A TIME and secure
them to the metal base
outer ring



- Secure the 24 light strands to the metal base outer ring as shown in Fig. 7

Fig. 7



- Raise the pole to 20 feet as shown in Fig. 8, tighten the center ring support. Connect the power transformers to a power outlet. The white flashing controller and the black power transformer should be off the ground.

POWER TRANSFORMER:
Input: 120 VAC 60 Hz
Output: 20VAC 1000mA

Fig. 8

- Set flashing modes. As shown in Fig. 9, each time you press the controller, it will change one flashing mode. There are eight different modes including steady lights or various flashing sections (Note: The flash mode always starts from its default setting each time when the light set is powered on. It will not stay at the previous setting.)



Attention:

- To prevent strands from getting tangled, each time you need to lower the pole to do any adjustments, you must strap the light strands 2 times with 6 strands in a group (four groups for a tree set) using the Velcro strips. Please refer to the details in "Take-down Instructions."
- If you have a 25ft. pole you will not pull the top section of the pole to set up this light set.
- It is normal for the flashing controller or the power transformer to turn warm when it is working.
- Raise the light kit high enough above the ground. Do not let water, snow, or ice cover the light kit base. This will ensure that the lights work properly, and will help the metal base remain in good condition.
- To prevent the light kit from getting damaged in severe bad weather such as rain, wind, or snow storm, the light kit should be taken down and stored in a safe place.

Important

Do not let power transformer or flashing controller submerge or soak in water. Do not use any other transformers other than the one included with this product. Improper use of transformer may damage both the product and the transformer, and may cause the risk of fire. Connect the power cord to the transformer, and then connect the transformer to a power outlet.

Product Warranty

The Flag Company Inc. offers a limited 90 day warranty against manufacturer's defect(s) from date of purchase.